



Contact Us  
Web <https://en.tiltpro.co.kr>  
Email [overseas@tiltpro.co.kr](mailto:overseas@tiltpro.co.kr)  
Tel +82-1544-7705  
Fax +82-31-723-0139

We Design the Lives and Worksites of Our Customers  
*The Power That Moves Professionals*



*The Power That Moves Professionals*

**TILTPRO**

# TILTPRO CATALOG INDEX

## About TILTPRO Corp.

**p3**

Overview

**p4**

History & Achievements

**p6**

Key Businesses

**p8**

CEO Message

## Products

**p10**

Rotating Coupler & Thumb Grab

**p18**

Tilt Coupler

**p22**

Tiltrotator

## Customer Support

**p24**

Customer Support Service

**p26**

Inquiries for Purchase & A/S



## The Power That Moves Professionals

We Design the Lives and Worksites of Our Customers

“How has TILTPRO sparked the market and industry?”

While durable products and sleek designs are key contributors to our success, we started by asking a more fundamental question. To answer this, we listened to our customers’ feedback to gain insights into TILTPRO’s future direction.

TILTPRO has continuously innovated to improve customer work environments and grown by offering experiences that the market has yet to provide. Everything we do is focused on enhancing customer experiences through product and service innovation, strengthening our expertise, and elevating our professional reputation.

We strive to understand TILTPRO’s role from the customer’s perspective and are committed to meeting their expectations.

# History & Achievements



- 01. Achieved \$2 million in exports
- 08. Launched the TILTPRO brand & Developed the first full range of Tilt Couplers in Korea

2014~2017

2018

- 2014.04. Began exporting Demolition Attachments to Europe & the US
- 2015.07. Developed and exported Rail Cutters to Europe
- 2017.08. Developed the first Double Motor Compactor Plate in Korea and exported it to Europe



2021

- 03. Developed Rotating Coupler
- 07. Established Corporation
- 09. Registered for E-commerce Business
- 10. Developed cylinder-free Tiltrotator
- 11. Participated in the 11th Korea International Construction Equipment Exhibition
- 12. Signed a contract to export Rotating Couplers to Europe

2022

- 04. Relocated & Expanded the second factory in Eumseong, Chungbuk
- 11. Received the Minister of Industry Award for Contributions to the Development of the Construction Machinery Industry & Established the R&D Center in Hwaseong, Gyeonggi-do
- 12. Certified as a Gyeonggi Export Frontier Company & Selected as the Million Dollar Export Tower



TILTPRO is on a roll  
We're growing now and into the future

**1,887%**  
Annual Growth Rate

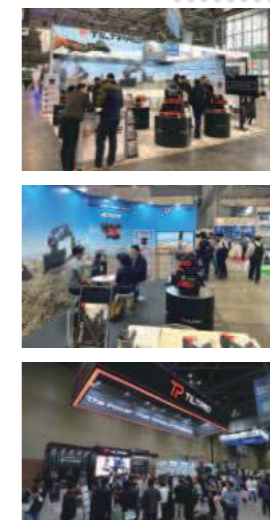
**1st place**  
Brand Preference

**↑4,000 units**  
Annual Production

- 03. Registered a patent for the Rotating Coupler (rotating device for construction equipment attachments)
- 04. Expanded the second factory in Eumseong, Chungbuk
- 05. Began operation of an integrated customer service center
- 06. Established a dedicated R&D department
- 09. Developed a Thumb Grab for Rotating Couplers & Selected as a venture-certified company
- 12. Developed a CW-type Rotating Coupler for European market
- 04. Participated in INTERMAT 2024 Paris, France
- 05. Participated in CSPI-EXPO 2024 Japan
- 06. Developed RQ004 Rotating Coupler for mini excavator
- 10. Participated in the 12th Korea International Construction Equipment Exhibition

2023

2024



2025

- 01. Launched RX10, Rotating Coupler with an automatic double locking solution
- 03. Launching FX7, Expansion of automatic double locking solution for Rotating Coupler
- 06. Participated in CSPI-EXPO 2025 Japan

# KEY BUSINESSES



### | Korean Domestic Market |

**The quality of TILTPRO extends to every aspect of customer service, even after sales**

TILTPRO's quality starts with its products and extends to every aspect of customer service, even after sales. We understand the importance of time, so we ensure fast, precise support with a professional service team, an integrated call center, and 27 distributors nationwide.



### | Global Export |

**TILTPRO is expanding globally, reaching construction sites worldwide**

By incorporating customer feedback from various regions into our business, we aim to strengthen and grow as a company.

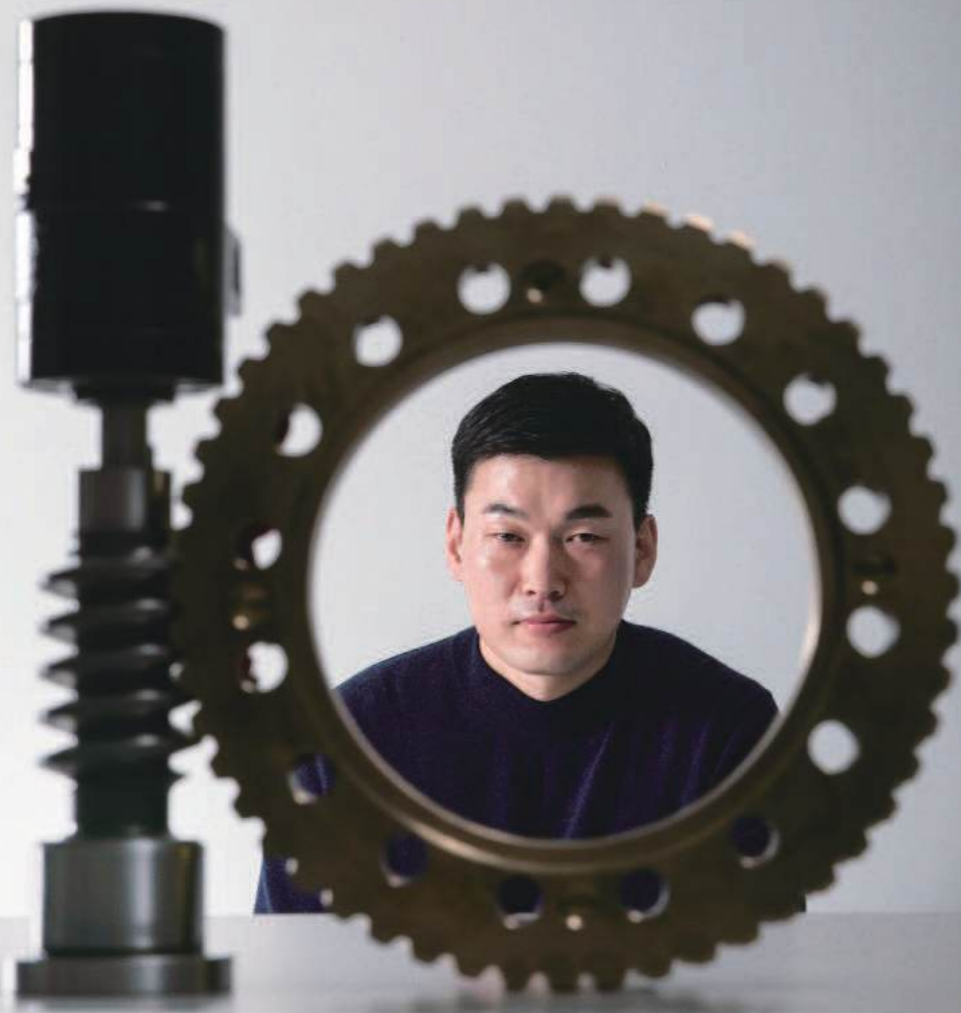


### | R&D and Production |

**TILTPRO handles everything from development to production, always prioritizing customer feedback**

Our products' durability stems from this commitment. With our in-house research and expert manufacturing team at our Eumseong facility, we continually strive to deliver top-quality products.





Dear valued customers and partners,

I would like to sincerely thank all of you for your trust and support in TILTPRO. Since our inception, creating value for customers has been at the core of everything we do. Through relentless innovation, we have developed cutting-edge technologies that will shape the future. Our mission is simple: to fully understand your needs and do everything we can to meet them.

Customer satisfaction drives us. Every product we design and every service we offer is crafted with the goal of exceeding your expectations. By listening to your feedback and applying what we learn, we are constantly improving, ensuring that our innovation stays in step with your evolving demands. We believe that your success is our success, and with that belief, we are committed to growing alongside you.

As we move forward, TILTPRO will continue to break new ground, exploring new markets and advancing technologies that create safer and more efficient work environments.

We truly appreciate your ongoing support and look forward to building a brighter future together.

Thank you.

Min Byoung Kyu  
CEO, TILTPRO Corp.

## PRODUCT PHILOSOPHY



### Maximized Durability

TILTPRO products are crafted to ensure professional performance and reliability for customers on the job site. The durability of our products is synonymous with trust in the field.



### Continuous Support & Care

At TILTPRO, we are committed to providing long-term maintenance services for customers. We guarantee fast and precise service, because we know our customers' time is valuable.



### Unmatched Quality

TILTPRO delivers the highest quality that exceeds customer expectations. Every product is carefully designed and subjected to thorough quality control to ensure flawless performance. Regardless of the conditions, TILTPRO products guarantee stability and consistent quality for our customers.

# ROTATING COUPLER

Smaller, But Stronger  
360° Infinite Rotating Coupler



TILTPRO Corp.



## Perfect Balance

Optimized weight and a compact design that maintain perfect balance

### [ Lightweight ]

The lightweight design maximizes operational efficiency without the need for a counterweight.

### [ Compact Structure ]

The minimized offset height enhances both the digging power and operational efficiency.

## No More Backlash & Play Worries

Our design eliminates the need for a backlash adjustment device

### [ Center Ring Support Structure ]

- Patent for our unique triple structure, which features a center bearing, worm wheel, and rotary joint.
- Maximizes bearing surface area while maintaining a compact form to optimize load distribution.
- Prevents hydraulic fitting loosening with fixed upper and lower blocks on the rotary joint.



### [ Durability through Details ]

- Uses specialized structural steel optimized for welding, to prevent the likelihood of cracks.
- Automatically expels deteriorated grease through new grease injection, ensuring optimal equipment condition.

## Ultimate Efficiency

### [ 100% Performance Optimization ]

- Maximizing rotary joint passages to minimize flow loss.
- Fully utilizing the performance of high-flow attachments like breakers.

### [ Smooth and Precise Control ]

- Powerful, smooth rotation achieved with optimal gear ratios.
- Minimal operator fatigue through precise rotation control.

# R-SERIES

## ROTATING COUPLER



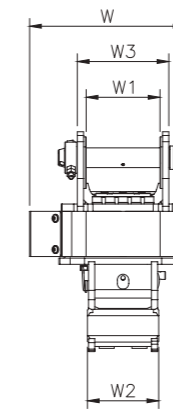
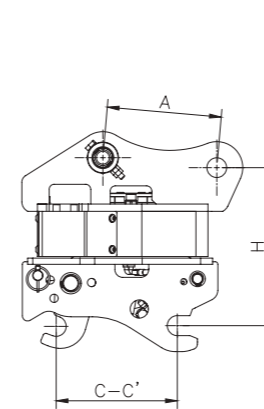
Rotating Coupler

Item	Unit	RQ004	RQ007	RQ010	RQ019
Max Bucket Width	mm	1000	1200	1300	1700
Unit Weight	kg	88	167	230	438
Rated Pressure	bar	175	175	175	175
Rated Flow	lpm	20	60	60	60
Rotation Torque	Nm	39.3	147.6	176.4	252
Pin Diameter	mm	Ø38	Ø45	Ø50	Ø65
Overall Width (W)	mm	299	374	421	485
Mounting Width (W1)	mm	142	167	180	277
Mounting Width (W2)	mm	137	153	176	257
Width (W3)	mm	176	217	252	348
Pin to Pin (A)	mm	220	290	300	420
Offset Height (H)	mm	304	356	381	445
Pickup Range (C-C')	mm	183-233	243-303	290-321	369-416

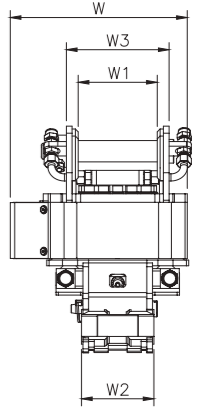
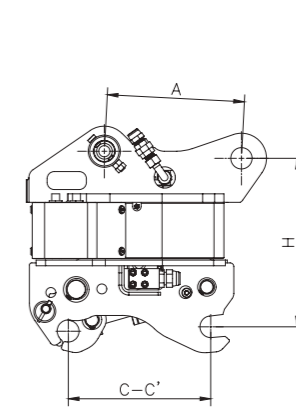
※ YANMAR

※ KOBELCO

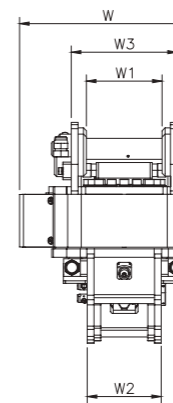
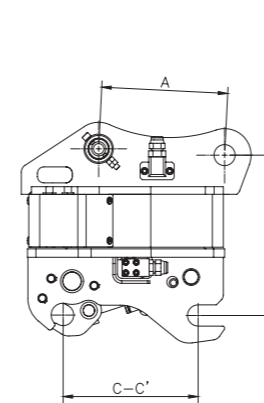
### 2.5-3.9ton RQ004



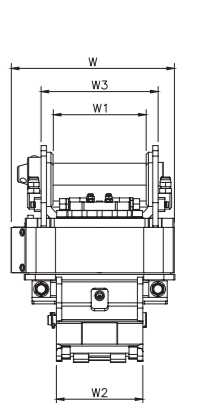
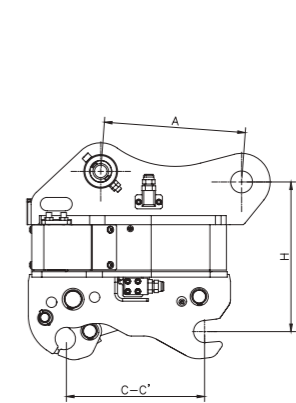
### 4-6.9ton RQ007



### 7-9.9ton RQ010



### 10-19ton RQ019



# RX-SERIES

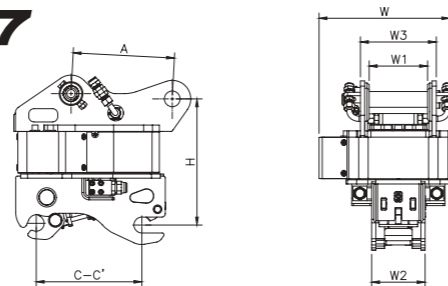
## ROTATING COUPLER



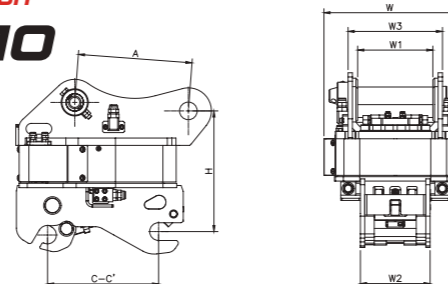
Xtreme Innovation, Xclusive Durability, Xpertise by TILTPRO

Item	Unit	RX7	RX10
Max Bucket Width	mm	1200	1700
Unit Weight	kg	168	443
Rated Pressure	bar	175	175
Rated Flow	lpm	60	60
Rotation Torque	Nm	147.6	252
Pin Diameter	mm	Ø45	Ø65
Overall Width (W)	mm	374	485
Mounting Width (W1)	mm	167	277
Mounting Width (W2)	mm	153	257
Width (W3)	mm	217	348
Pin to Pin (A)	mm	290	420
Offset Height (H)	mm	361	445
Pickup Range (C-C")	mm	260-301	377-409

### 4-6.9ton RX7



### 10-19ton RX10



**Automatic Double Locking System Beyond The Safety Pin**  
(Fully compliant with ISO13031 standard)

**1st Rear Safety Locking System**  
The force of the high-tensile double spring that supports the hydraulic cylinder provides complete protection so that the bucket will not come loose even if the cylinder falls.

**2nd Front Safety Locking System**  
The front latch, which operates simultaneously with the cylinder, automatically locks the front pin of the bucket, preventing the bucket from falling out even if the rear pin is accidentally disengaged.

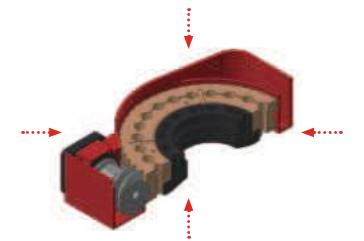
**Easy Maintenance**  
Implementation of an efficient automatic double locking system with a simple structure, as well as the realization of an economical and easy-to-maintain solution.



### MCR

#### Multiload Center Ring

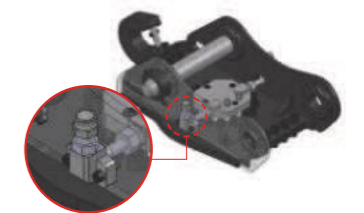
A key solution to minimize axial and radial play is to effectively distribute both axial and radial loads and external shocks that occur during rotation.



### IMB

#### Integrated Modular Block

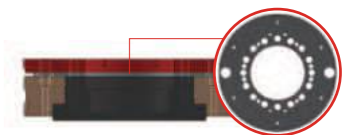
Integrates and simplifies the functions of complex components, such as hoses and fittings, to resolve issues related to leaks and loosening.



### AFD

#### Anti-Friction Slide Disc

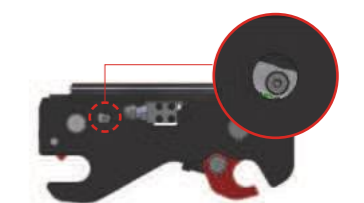
A protective solution with special materials and processing technology that complements the Multiload Center Ring to achieve smooth rotation and distribute the load, minimizing friction and play.



### ERS

#### Emergency Release System

The emergency solution allows the operator to temporarily restore operation by discharging hydraulic pressure through himself, even in the event of poor cylinder operation due to a check valve or hydraulic circuit abnormality.





# G-SERIES THUMB GRAB

Dedicated Thumb Grab Compatible with the R-Series



**G7**



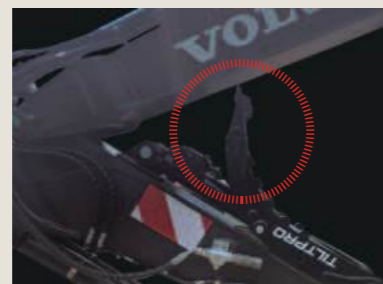
**G10**

Item	Unit	G7
Carrier Weight	ton	4-6.9
Operating Pressure	bar	196
Unit Weight	kg	89
Overall Length	mm	1104
Overall Height	mm	463
Grab Radius	mm	1184
Mounting Width	mm	217
Overall Width	mm	335

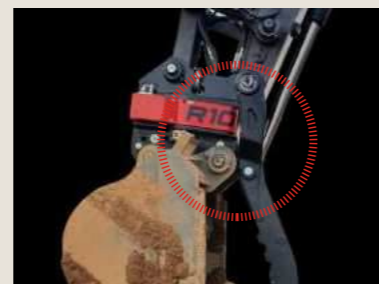
Item	Unit	G10
Carrier Weight	ton	10-19
Operating Pressure	bar	196
Unit Weight	kg	242
Overall Length	mm	1502
Overall Height	mm	598
Grab Radius	mm	1577
Mounting Width	mm	350
Overall Width	mm	478



Fully compatible with the bucket tooth end



Minimizes interference with the excavator boom



Reduces interference between excavator links

Compatible with any attachment,  
provides optimal performance for any task



Grading Beam



Grapple



Forklift



Compactor



Tilt Bucket



Sweeper



Slope Cutting



Trenching



Backfilling



Grading

# TILT COUPLER

Designed by Experts for Professionals  
With up to 180° of tilt



TILTPRO Corp.



## Zero Work Interference

Similar width to a standard coupler

### [ Minimal Width ]

- Maximizes the performance of the Tilt Coupler in confined spaces.
- Reduces risk of product damage due to minimal work interference.

### [ No Cylinder ]

- Helical Geared Tilt Coupler eliminates the need to consider cylinder interference.

## Operations That Only Tilt Coupler Can Do



Performing Non-Standard Tasks



Maintaining Level Tools



Utilizing Bucket Edge

## Tilt Actuators



Optimized drive with quadruple helical gear meshing

### [ Maximum Durability ]

- Tight tolerances to dissipate external shocks and reduce workloads.

### [ Precise Gear Ratio ]

- Smooth tilting and strong holding torque for precise manipulation.

# T-SERIES

## TILT COUPLER



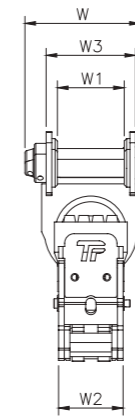
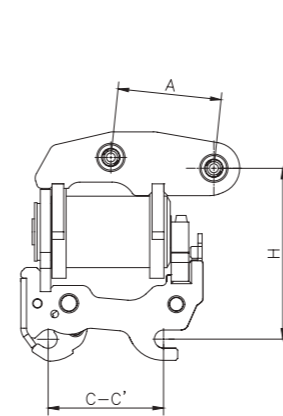
Tilt Coupler

Item	Unit	TC004	TC007	TC010	TC014
Displacement	cm <sup>3</sup>	520	1050	1450	1920
Max Bucket Width	mm	1200	1400	1500	1700
Unit Weight	kg	80	130	220	320
Total Tilt Angle	degree	180°	180°	180°	134°
Rated Flow	lpm	3-6	6-12	12-20	24-28
Rated Pressure	bar	210	210	210	210
Output Torque	Nm	2800	4700	7300	10500
Holding Torque	Nm	6800	12000	18000	26000
Port Connection	BSP	1/4"	1/4"	1/4"	1/4"
Pin Diameter	mm	Ø38	Ø45	Ø50	Ø65
Overall Width (W)	mm	245	280	342	433
Mounting Width (W1)	mm	142	167	202	277
Mounting Width (W2)	mm	137	147	176	257
Width (W3)	mm	190	217	265	340
Pin to Pin (A)	mm	220	290	310	395
Offset Height (H)	mm	360	407	432	510
Pickup Range (C-C')	mm	180-244	252-303	272-325	369-451

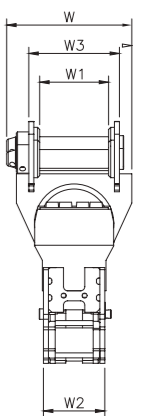
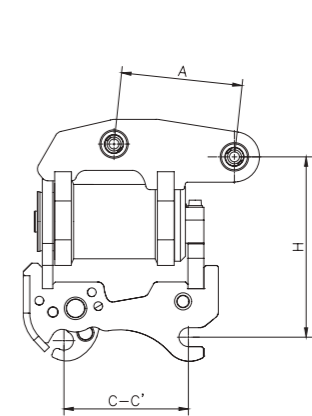
※ YANMAR

※ YANMAR, KOBELCO, HITACHI

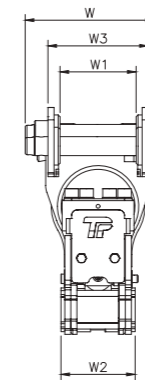
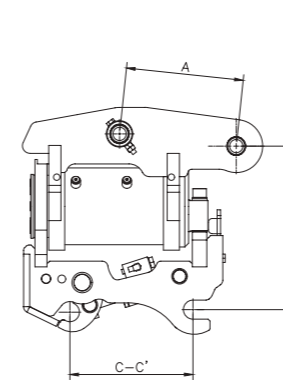
### 2.5-3.9ton TC004



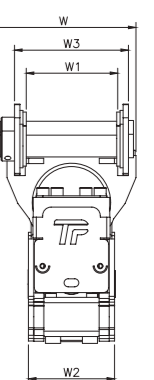
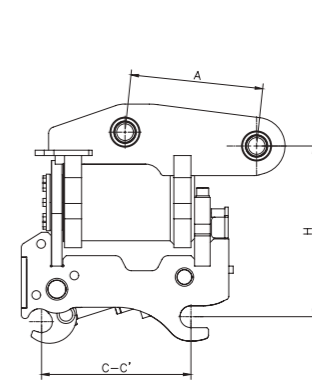
### 4-6.9ton TC007



### 7-9.9ton TC010



### 10-14ton TC014



# TILT ROTATOR

Simultaneous Tilt and Rotation Work  
Effortless Upgrades and Maintenance



TILTPRO Corp.

## Simple Hydraulic System without Electrical Control

Utilizes the existing hydraulic system without any modifications

### [ Equipment Upgrade ]

By combining the TILTPRO Rotating Coupler and Tilt Actuator, existing rotary coupler users can easily upgrade.

### [ Simplicity ]

- Operable using the standard joystick, without the need to retrofit a special joystick.
- No need for equipment replacement or additional electrical installations, reduces installation time.
- Lower failure rates due to electrical system issues or oil leaks.
- Quick repairs possible in case of malfunction.

## Optimal Balance

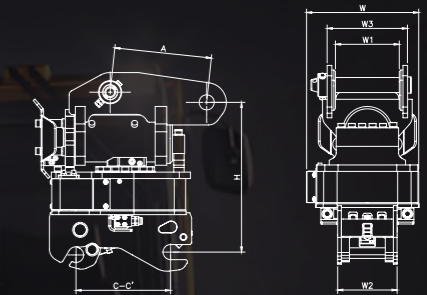
Directly mounting to the equipment minimizes the weight, height, and overall width of the attachment

### [ Helical Gear Tilting System ]

Using helical gear technology that eliminates the need to consider cylinder interference, providing a maximum tilt angle of 50° to both sides.

### [ Dedicated Tilt Actuator for Tiltrotator ]

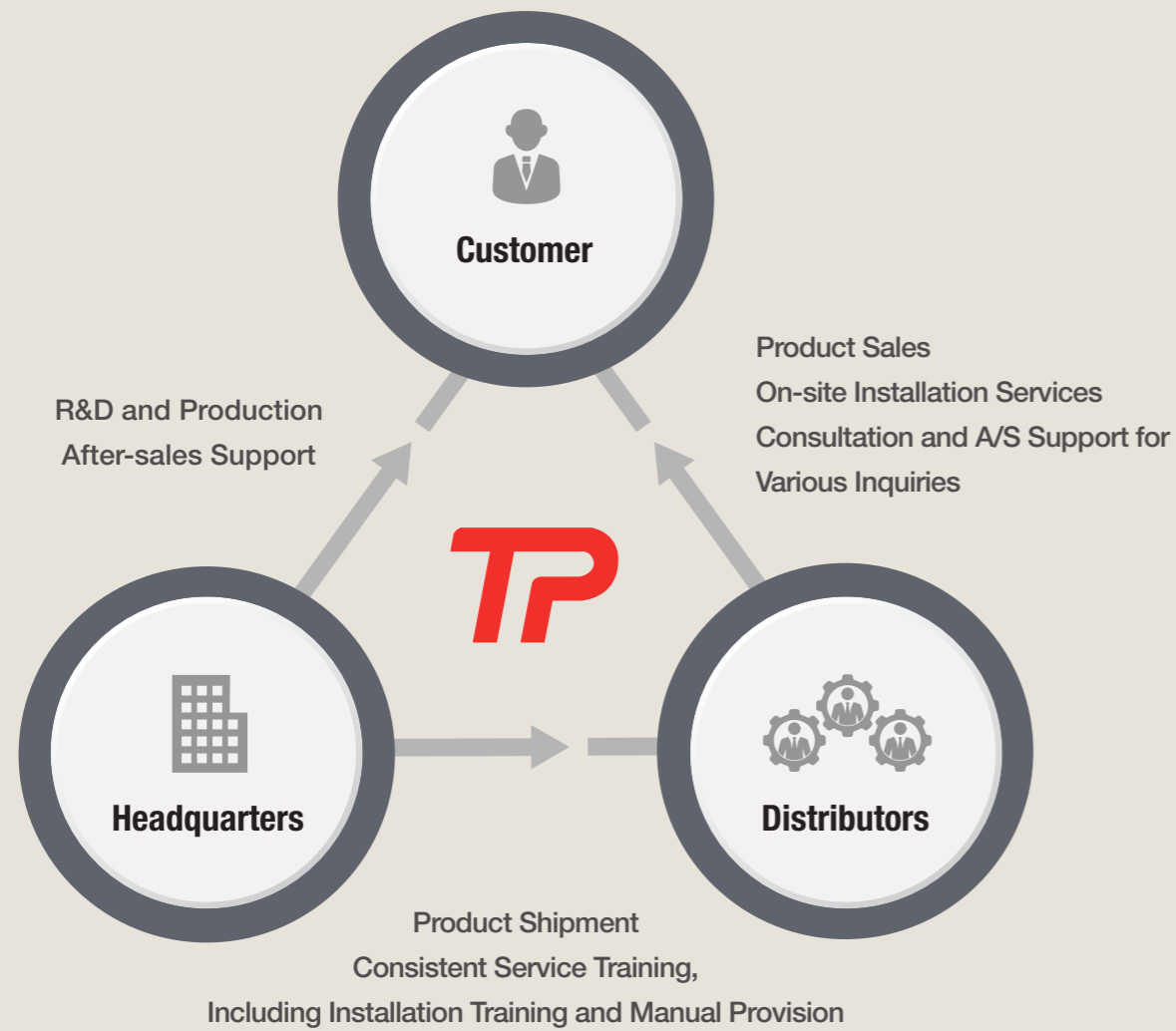
Achieves lighter weight and lower height.



Item	Unit	TXR19
Carrier Weight	ton	14-19
Displacement	cm <sup>3</sup>	1950
Max Bucket Width	mm	1700
Unit Weight	kg	623
Total Tilt Angle	degree	100°
Rated Oil Flow (Rotation)	lpm	60
Rated Pressure (Rotation)	bar	175
Rated Oil Flow (Tilt)	lpm	24-28
Rated Pressure (Tilt)	bar	210
Output Torque	Nm	15000
Holding Torque	Nm	38000
Port Connection	BSPP	1/4"
Pin Diameter	mm	Ø65
Overall Width (W)	mm	484
Mounting Width (W1)	mm	276
Mounting Width (W2)	mm	257
Width (W3)	mm	348
Pin to Pin (A)	mm	420
Offset Height (H)	mm	648
Pickup Range (C-C')	mm	377-409

# T-PACKAGE CARE SERVICE

At TILTPRO, quality signifies not only the excellence of our products but also the entirety of our customer service experience.



## Contact



### Headquarters (Office & Factory)

**Division :** Sales Division, Overseas Business Division, Brand Strategy Division, Management Support Division, Industrial R&D Center, Customer Support Center

**Address :** 53-30, Dongtansandan 6-gil, Hwaseong-si, Gyeonggi-do, Republic of Korea



### Eumseong Factory

**Division :** Manufacturing Division

**Address :** 1397-13 Jinseong-ro, Geumwang-eup, Eumseong-gun, Chungcheongbuk-do, Republic of Korea



27 Distributors



Integrated Call Center



# T-PACKAGE NETWORK

With an integrated call center and 27 distributors nationwide, top-quality service is guaranteed anywhere.

## Purchase Process



### Product Consultation

Consult with your nearest distributor or the integrated call center to discuss the product and finalize your purchase.



### Installation Schedule Coordination

Coordinate the installation schedule with the distributor and arrange for product dispatch.



### Installation

The distributor conducts on-site installation and provides guidance on using the product.



### Contract and Payment

Sign the purchase contract (including structural modification details) and complete the payment.

## A/S Process



### 01 | A/S Request

Receive request via distributor or the integrated call center.



### 02 | Consultation

Determine if repairs should be conducted on-site or at the factory.



### 03 | Repair

Conduct repairs at the designated location.



### 04 | Release

※ For factory repairs, release and reinstall the product.

## Inquiries for Purchase and A/S



Integrated Call Center  
**+82-1544-7705**

Nationwide Distributor Information

